

Invitation

Biophotonic in practical medicine

Friday, 15th August 2008

Congress-Center Essen

Hall "Rheinland"

Norbertstrasse - 45131 Essen

Admittance: 5:30 p.m.

Start: 6:00 p.m.

End: approx. 10:00 p.m.

ZDN-Institute

In 1996, the ZDN Institute was founded with the aim to advance, support, implement and document ideas from the health sector. ZDN stays in active contact and scholarly exchange with all definitive physicians and medical organisations as well as, through Prof. Dr. Fritz-Albert Pepp and the IIB (International Institute of Biophysics) with 22 internationally recognised universities.

Topics:

- *Infrared Thermography – thermal imaging as a new, non-invasive method for medical examinations*

Dr. med. Klaus-Peter Schleich, ZDN

- *Perspectives for Acupuncture, Psychosomatics and clinical, practical Medicine*

Dr. med. Walburg Marie-Oehler, DÄGfA

- *Solitons as the emerging explanation of evidence-based-medicine*

Prof. Dr. Larissa Brizhik, University of Kiev

- *Regulation Diagnostics as a method of applying Biophotons in Medicine*

Prof. Dr. Fritz-Albert Pepp, IIB

The structures that become visible with infrared thermography and the resulting possible interfering fields are caused by biophotons. In any living system we will find a photon field which is characterised by an extremely high coherence. This field develops information channels, which control processes in the organism. If the coherence breaks down, the body is in danger of losing its equilibrium and, as a result, of falling sick. By

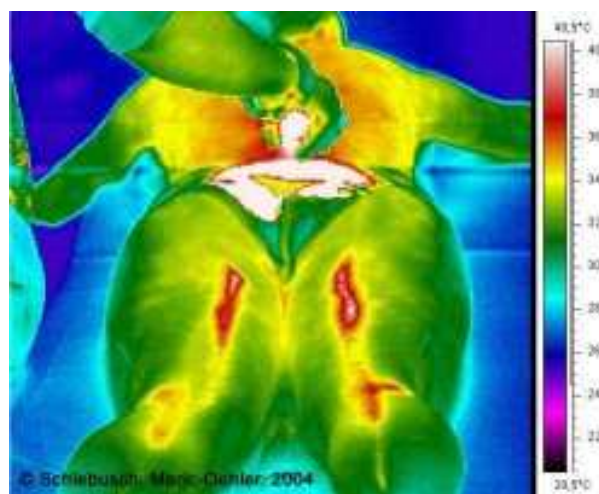
making visible the energetic relations in the body, it is now possible to develop an individual - i.e. fitted to the physical-energetic situation - therapy. Further details will be explained, using adequate examples.

There are various possible areas of application:

- *early detection of a disease*
- *early diagnostics of changes of the female breast (cancer check-up)*
- *disease and degeneration of the musculoskeletal system (e.g. arthritis, arthrosis)*
- *circulatory disorder*
- *functional and somatoform disorder*
- *chronic fatigue syndrom, burnout*
- *anxiety disorder, depression.*

Methodology of Infrared Thermography

With the aid of an infrared camera, disorders of the regulation system in the infrared range of the spectrum of 3.4 - 5 μm (micrometer) can be made visible. For the first time it has been possible to show an acupuncture channel (in the picture: bladder meridian) through heat stimulation (moxibustion).



A live demonstration will illustrate this impressive diagnostic method.

This symposium is supported by the following companies:

- FLIR-Systems
- Lexus Forum Mönchengladbach
- RWE (inquired)
- BKKfutur.

A small exhibition in the lobby affords an opportunity for exchange. Snacks and drinks will be available.

**A press conference will take place on 14th August 2008
at 11:00 a.m. in the Congress-Center Essen.**

Registration

Please fax the registration form provided below to +49 201 731484 or mail to info@zdn-institut.de.

Application deadline is 13th August 2008.

- I will attend the event.
- I will attend the event with _____ people.
- I will not be able to attend the event.

Admission fee: €25.- per person.

You may transfer the amount due in advance to following account:

Nationalbank Essen

Account No 300 42 44

Sort Code (BLZ) 360 200 30

Personal data

Last Name

First Name

Street

Postal Code, City

Telephone

Fax

Email

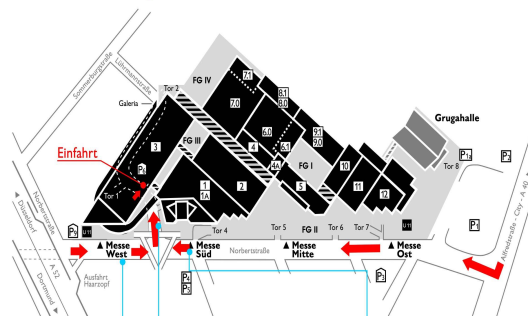
Further Questions

If you have any further questions, please do not hesitate to contact *Marcus Wihda* on Number +49 172 29 31 785 or mail to info@zdn-institute.de.

Directions

Anfahrt Parkplatz P6 A/B

Bitte beachten Sie ggf. auch die Hinweise des Parkleitsystems.
Wir wünschen Ihnen eine gute Fahrt.



Anreise über die A 52:

Aus Richtung Bochum bzw. Düsseldorf kommend nehmen Sie bitte die Ausfahrt Nr. 27 (Essen Haarzopf) resp. Nr. 28 (Essen Rützenscheid). Folgen Sie der Norbertstraße für ca. 350 m und biegen dann links in die Lührmannstraße ein (Foto 1). Nach ca. 100 m finden Sie rechts die Einfahrt zum P6 A/B.

Anreise über die B 224:

Aus Richtung Essener Innenstadt bzw. A 40 kommend biegen Sie rechts in die Norbertstraße ein. Folgen Sie der Norbertstraße für ca. 660 m und biegen dann rechts in die Lührmannstraße ein (Foto 3). Nach ca. 100 m finden Sie rechts die Einfahrt zum P6 A/B.

Foto 1: Norbertstr. von A 52



Foto 2: Einfahrt P6 A/B



Foto 3: Norbertstr. von B 224



Organisation

ZDN-Institut GmbH

Hufelandstraße 60

45147 Essen

Tel +49 201 74 50 44

Fax +49 201 73 14 84